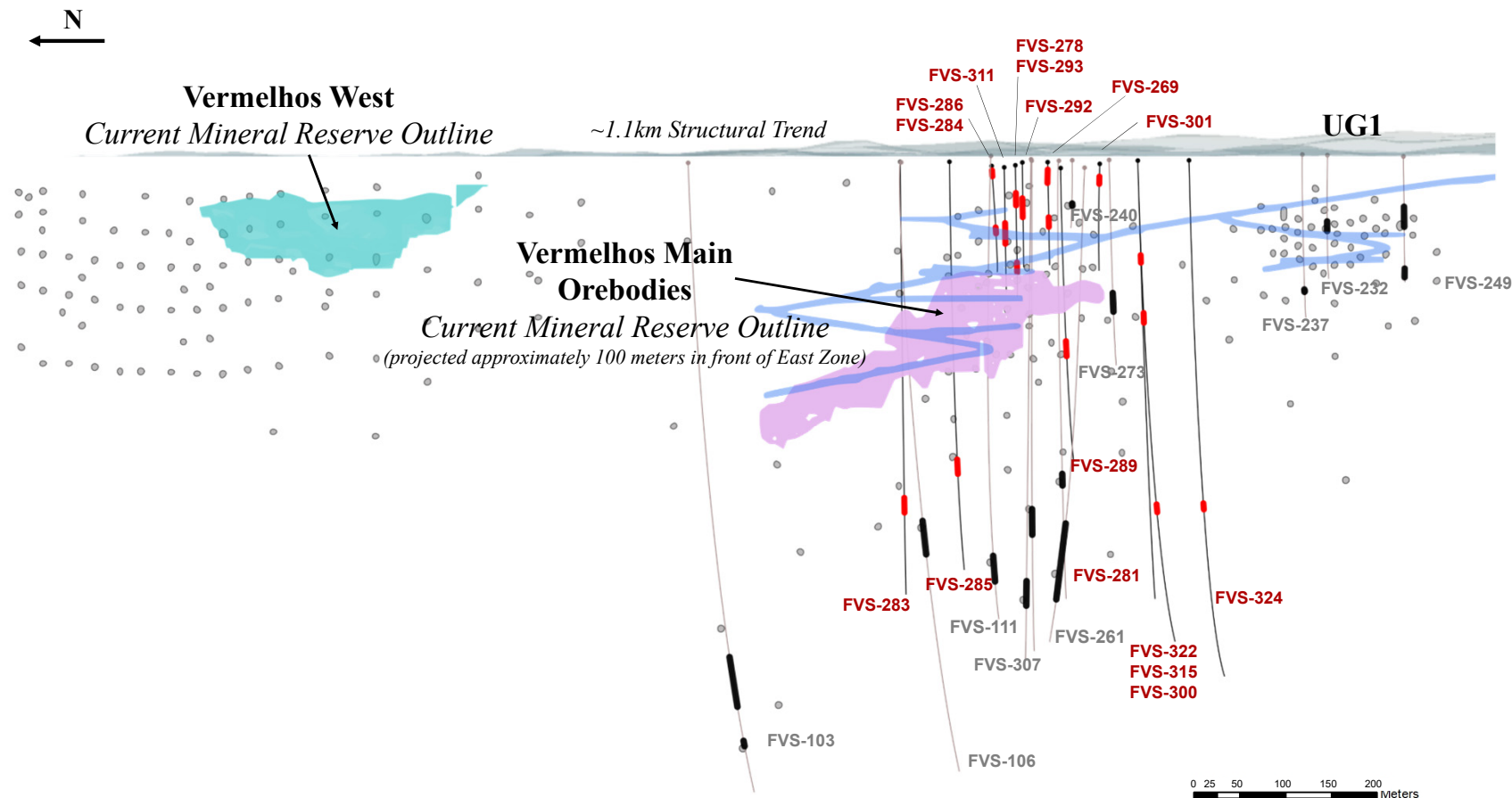
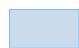







Figure 3

Vermelhos East Zone, North-South Long Section



LEGEND

- | | |
|--|---|
|  Completed Development |  Projected Current Mineral Reserve, Vermelhos Main Orebodies |
|  Q4 Exploration Update Intercepts, Vermelhos East Zone |  Projected Current Mineral Reserve, Vermelhos West |
|  Previously Announced Vermelhos East Zone Intercepts | |
|  Identified Pierce Point within Interpreted East Zone Boundary Limits | |

Special Note: Vermelhos East Zone projection shown to demonstrate future area of exploration within the Vermelhos District. The projection is based on data compilation work which includes review of geological controls, structural analysis and copper mineralization identified during the Company's technical programs. The interpretation and boundary limits do not imply continuity of mineralization, or actual thickness of mineralization that has yet to be defined. For additional scientific information related to the Vermelhos Mine, please refer to the Company's Vale do Curaçá Property Technical Report dated October 17, 2018.

Figure 4
West Limb Plan View

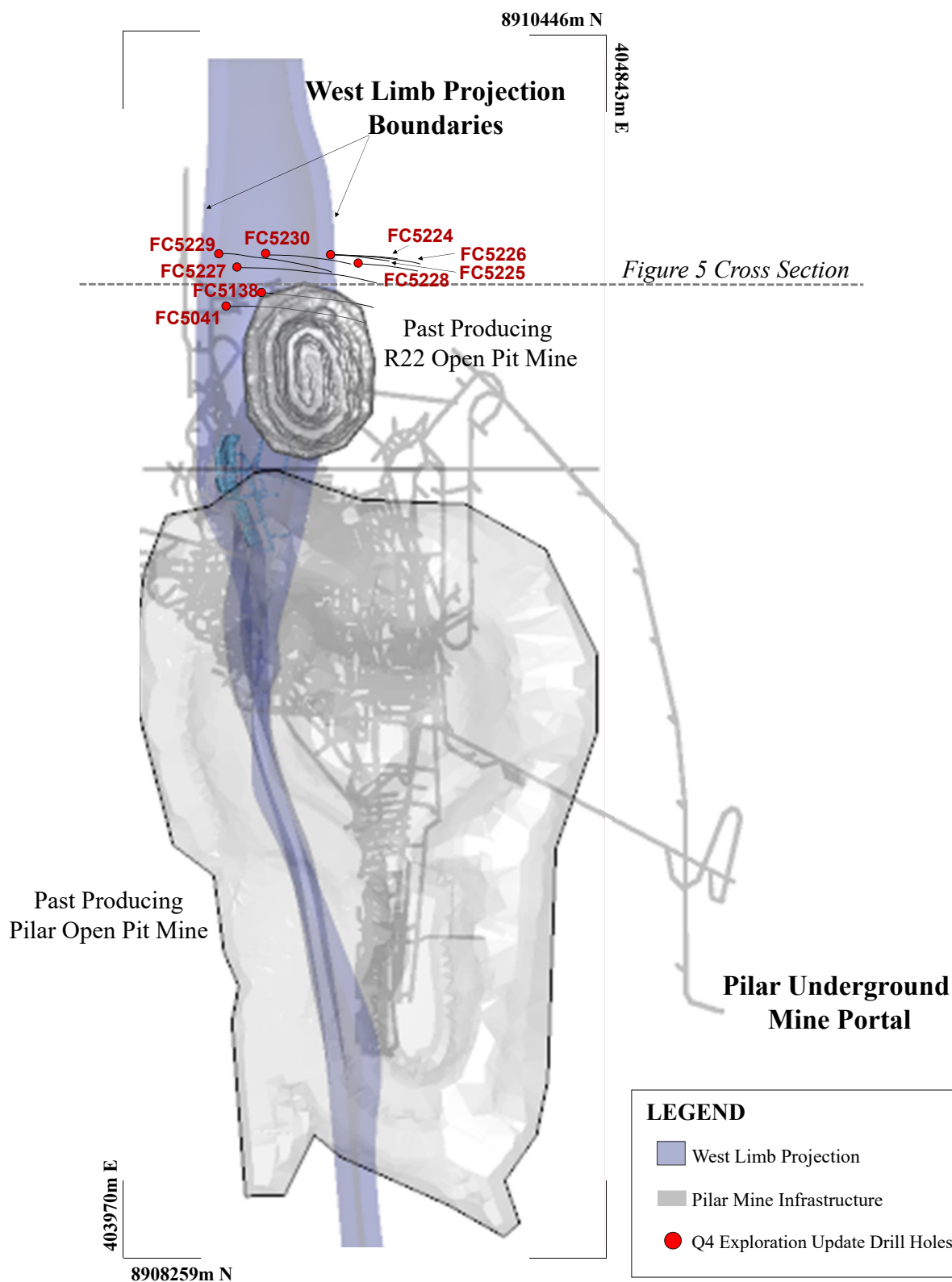


Figure 5
West Limb, Cross Section
View looking South

E ← ● → W

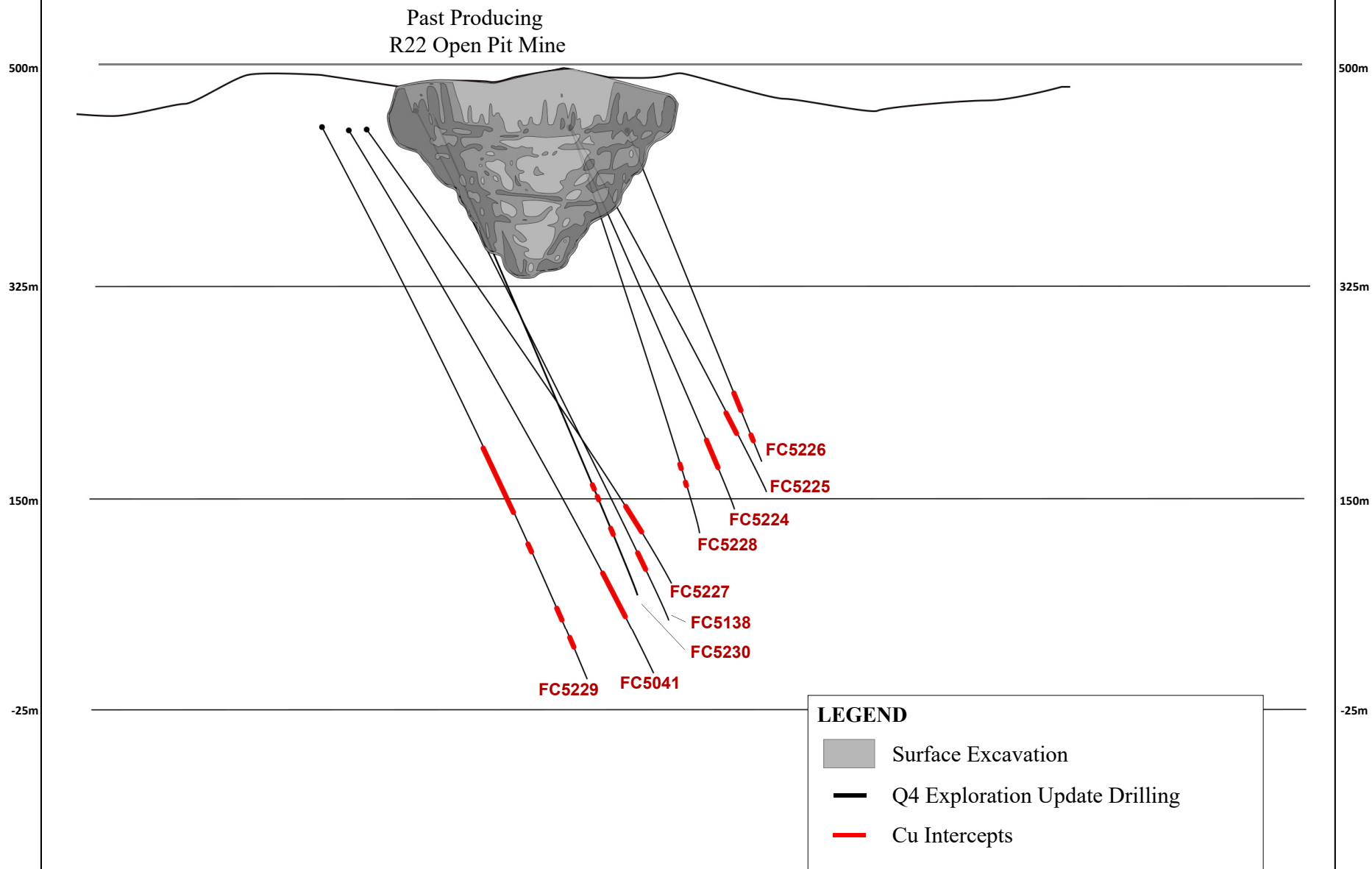


Figure 6
Deepening Extension, North-South Long Section

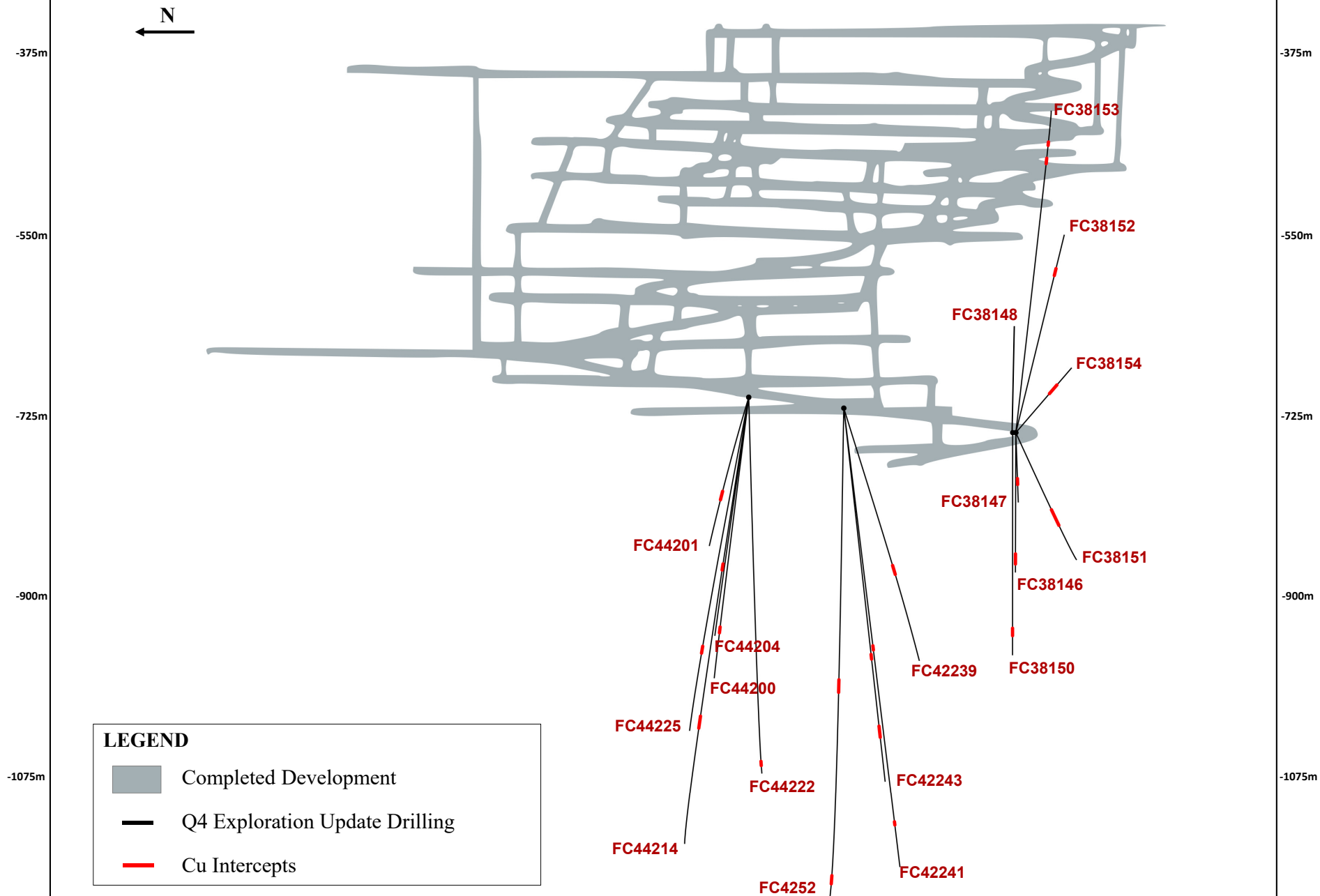


Figure 7

Pilar Mine, Deepening Extension
(Drilling from Level -709 and Level -722)

