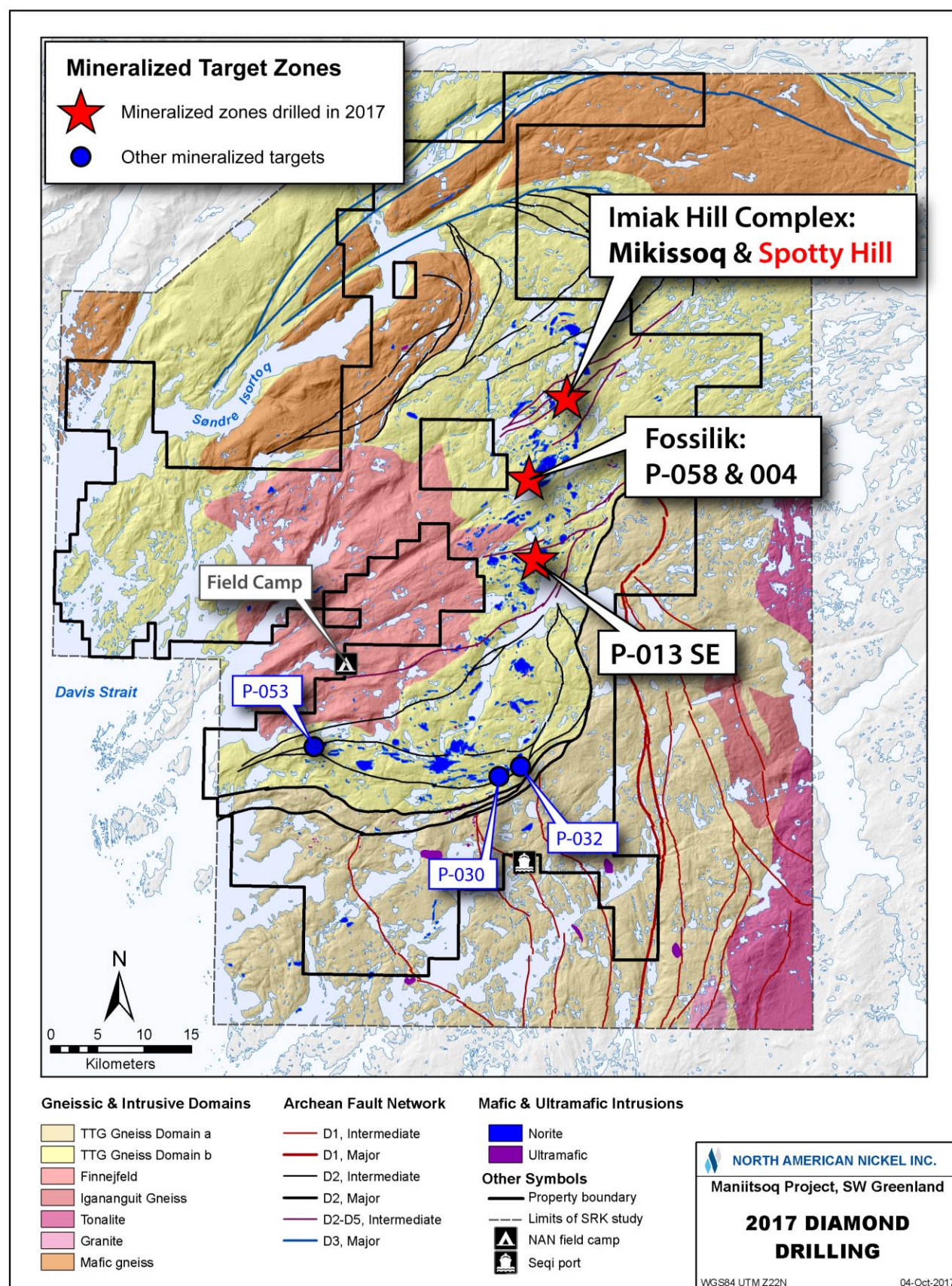


**Figure 1:** Location of 2017 drilling.





**Figure 2: Surface drill hole plan map of Spotty Hill.**

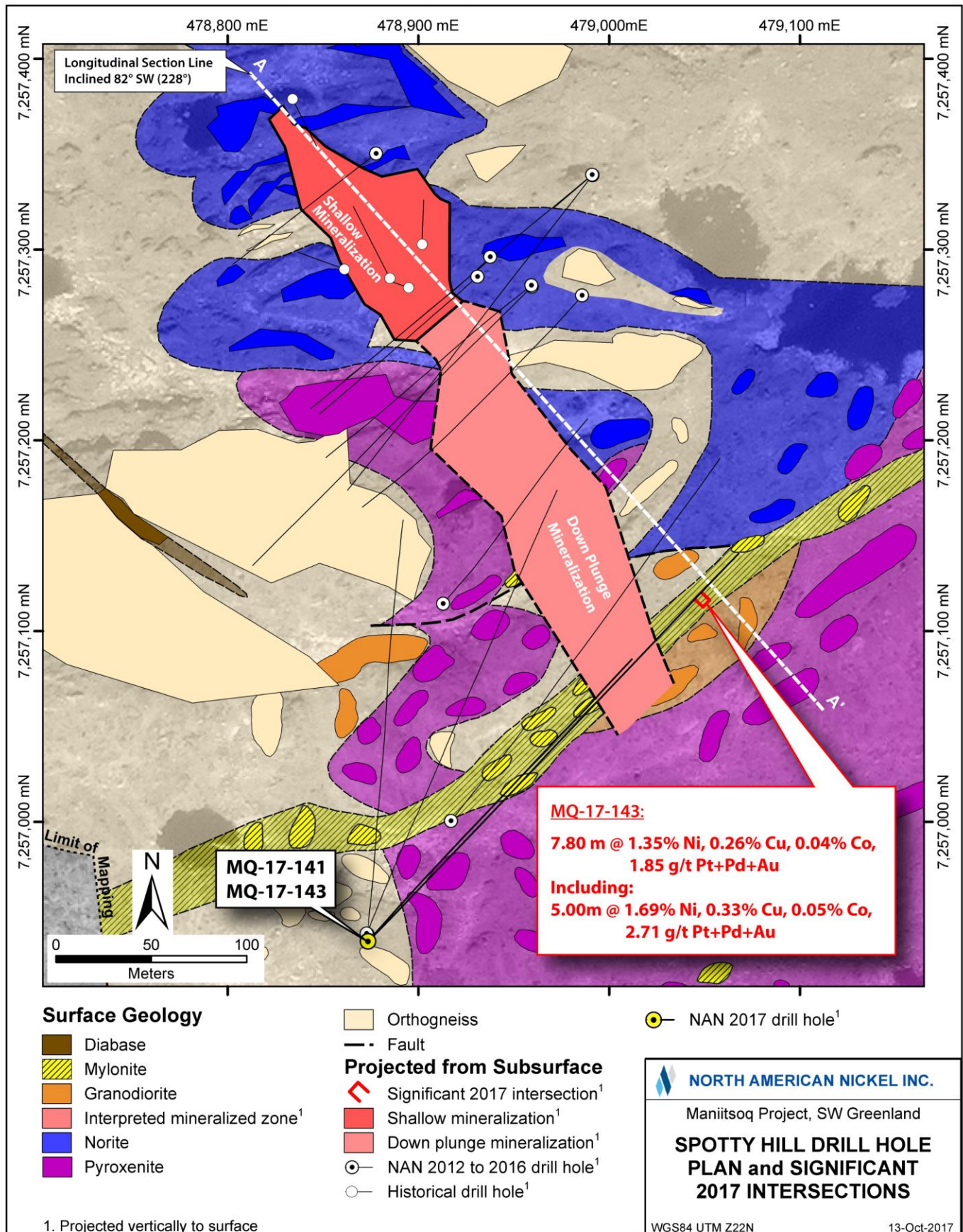
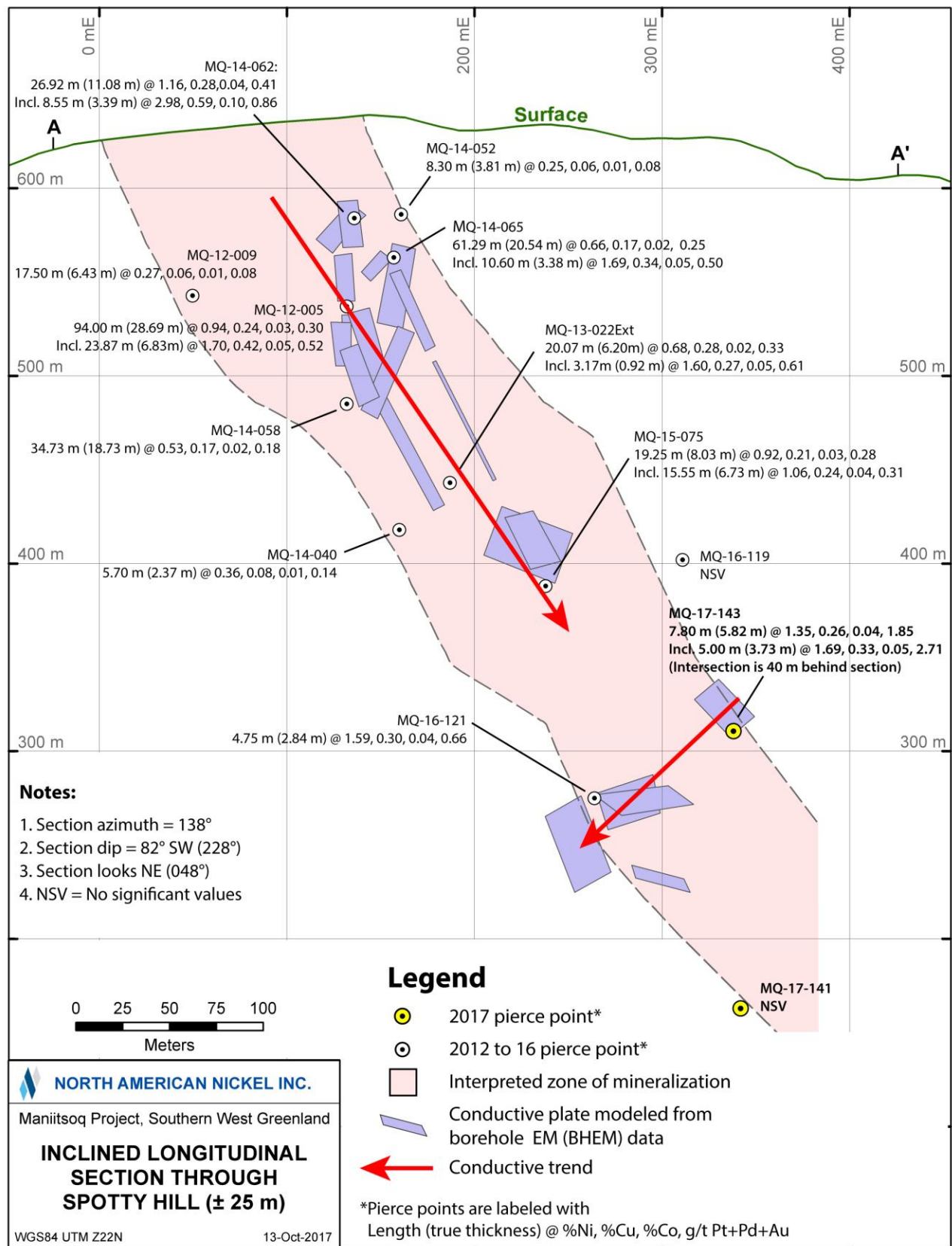
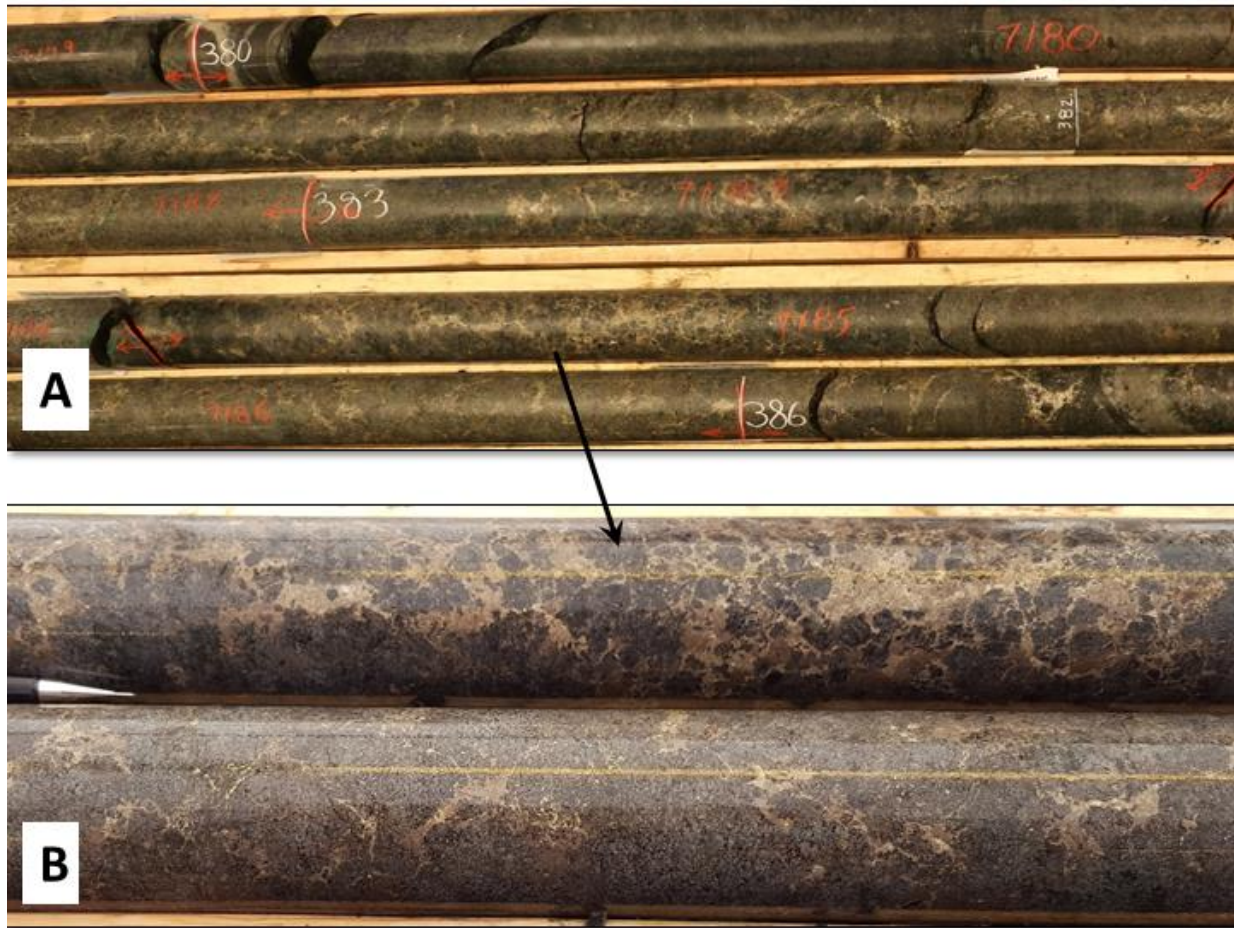


Figure 3: Inclined longitudinal section through the Spotty Hill mineralized zone. The azimuth of the section is 138° and it looks N 048° E and dips 82° SW.





**Figure 4:** Sulphide Textures, Spotty Hill Drill Hole MQ-17-143. NQ core size (47.6mm diameter)



- A) Stringer and breccia sulphides between 380 and 386.5 metres.
- B) Close-up showing brecciated appearance in upper row of core and formation of stringer sulphides in lower row of core.