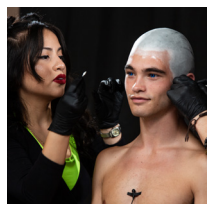




**BEFORE**



**AFTER**



## STEP 1

### Important notes when applying prosthetics!

- It's always best to have someone on hand to assist when applying.
- Always do a patch test on the hand to make sure you're not allergic to any of these materials.
- Latex and most adhesives are possible allergens.
- Always use safe removal techniques, it should never hurt to take a prosthetic off.
- Take your time when removing and use a good remover.

### Prep the skin

- Remove oils from the skin with a toner or astringent.
- You can find a good inexpensive toner like witch hazel at any drugstore.
- Apply a barrier cream like Dermashield to protect the skin.
- Don't use too much barrier cream, or it may cause the piece to not stick as well.



### Prep the hair

- Using gafquat (a copolymer that forms a clear, non-tacky, continuous film; available online) and a little water, slick the hair back with a comb so it lies smooth underneath the bald cap.
- You can also use an inexpensive gel, available at any drug store or dollar store.

## STEP 2

### Apply contact lenses

- Follow the instructions on the box for the lenses you are using for proper care. Always take extreme precaution when using FX lenses.
- Do your research on brands, cheap lenses are not good lenses.
- When in doubt just skip this step.
- Make sure to wash hands before applying contact lenses.



### Apply bald cap

- Using a vinyl bald cap, slip the cap over the head.
- You can also use a latex bald cap.
- Latex caps are available at most Halloween stores.
- Glue down the edges of the cap using Pros-Aide.
- Pros-Aide is a medical grade, acrylic based adhesive available online.
- Once the piece is glued down, using acetone blend away the excess edges.
- Using a powder puff, protect the eye when near.
- This step is only applicable with vinyl bald caps.
- With latex caps, trace the hairline with an eyeliner pencil, remove the cap. Trim about an inch past the hairline and reapply.



## STEP 3

### Apply Ears, Face, Neck & Horns

- Using Pros-Aide, apply foam latex prosthetics.
- First apply the ears, make sure they wrap the ear on both sides and line up the shapes of the prosthetic with the shapes of the ear.
- Blend edges using more Pros-Aide on a sponge or cotton swab.
- Then apply the face, making sure to apply from the center most point and fanning out.
- If a piece is too large for you, you can always fill gaps with a little bit of cotton.
- Never cut pieces, but rip them. A blunt edge is harder to hide than a jagged one.
- Use minimal glue around the eye area to avoid dripping.
- If you feel uncomfortable getting too close to the eye area with Pros-Aide you can also use eyelash glue.
- Follow the steps with the neck as well.

## STEP 4

### Apply the horns

- Apply the horns using a reference photo and try to recreate the crown of ice like the Night King.
- You can use a little bit of 99% alcohol to lift any edges that may have folded over.
- The 99% alcohol will reactivate the glue without removing it.
- Blend the pieces together seamlessly with more Pros-Aide stippled on with a sponge.
- The Pros-Aide will remain tacky until powdered with translucent powder.
- Run your finger along the edges to feel for any areas that may need more blending.
- If you need to do more blending, use a product called Bondo.
- Bondo is a thickened Pros-Aide.
- Use thin layers and let dry.
- Finally powder again when dry.

## STEP 5

### The foam latex is a sponge, so before you move into painting with water based or cream based paints, you need to seal it.

- Seal the piece using either straight up Pros-Aide or a tinted Pros-Aide mixture called Pax Paint.
- Pax Paint is a 70/30 mixture of Pros-Aide and acrylic paint.
- You can use any acrylic paint from a craft store.
- Dry with a blow dryer to speed the process.
- Once paint is dry, you can stipple over using a water based paint.
- Airbrush detail using an alcohol based paint.
- Then going in with thinned alcohol paint, fill in any cracks.
- Going back and forth with the water based and alcohol paints by hand, adjust the paint until you are happy with the finished look.